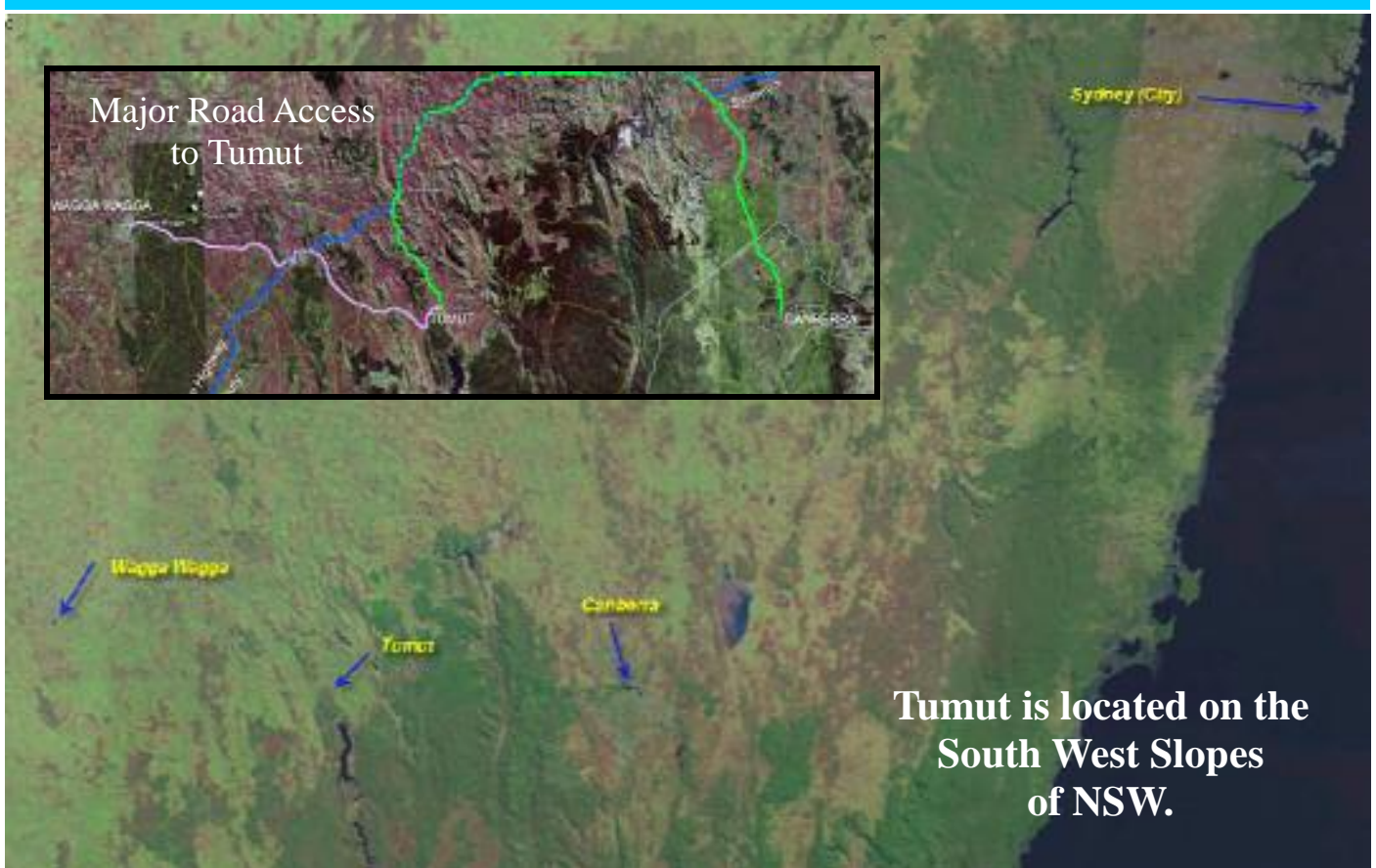


Tumut

(on the South West Slopes)



The road trip from Tumut -

- to Sydney is 400km (5 hours)
- to Canberra is 200km (2 hr. 15 min.)
- to Albury is 200km (2 hr. 15 min.)
- to Wagga Wagga is 100km (1 hr. 15 min.)

Ambulance

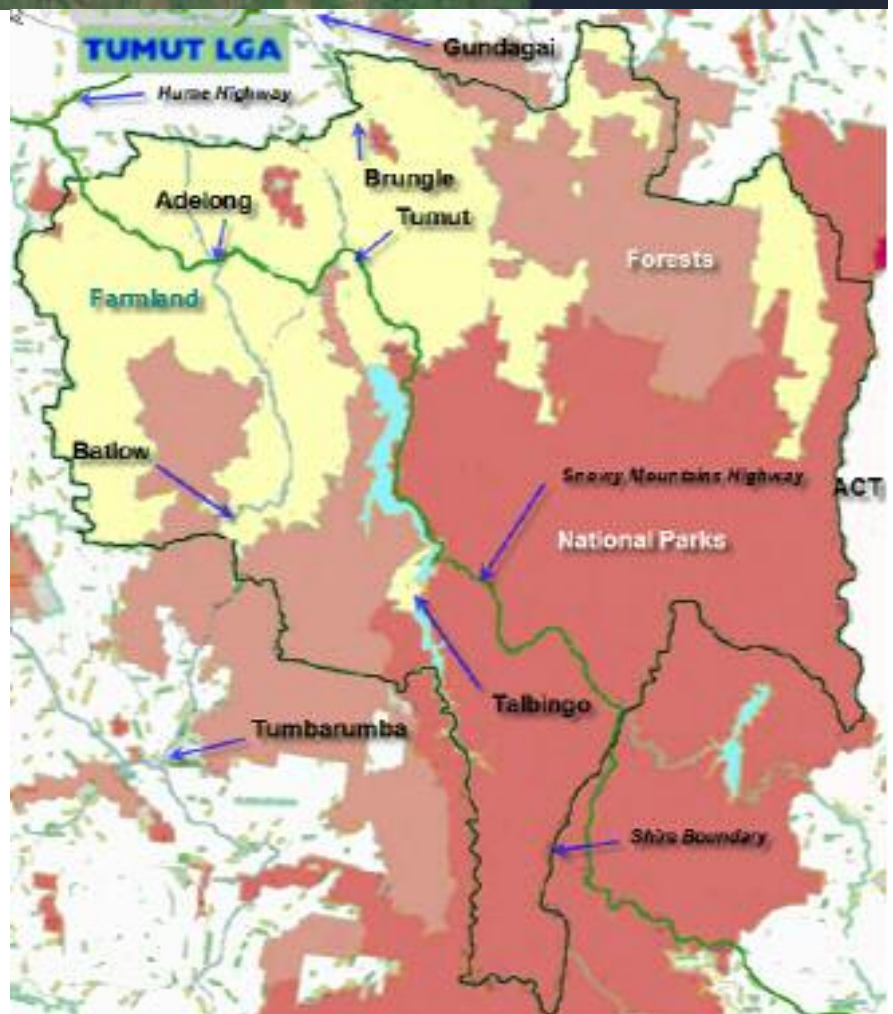
- Tumut Hospital has a helipad and is usually serviced from Canberra Hospital.
- Most land ambulance trips are to Wagga Wagga.

Retail

- Tumut is the major town on the SWS and provides commercial services to the surrounding towns.
- Unlike many country towns, Tumut has not lost any bank branches.
- Both the major supermarkets thrive in the town as do the two major hardware chains.

Manufacturing

Within the Tumut Shire are major timber mills, particle board, and paper manufacturers in addition to the largest apple cold storage facility in Australia.



Tumut—A modern rural place to live & work.



This document prepared by
"No more Bandaid Solutions Inc."
October 2006